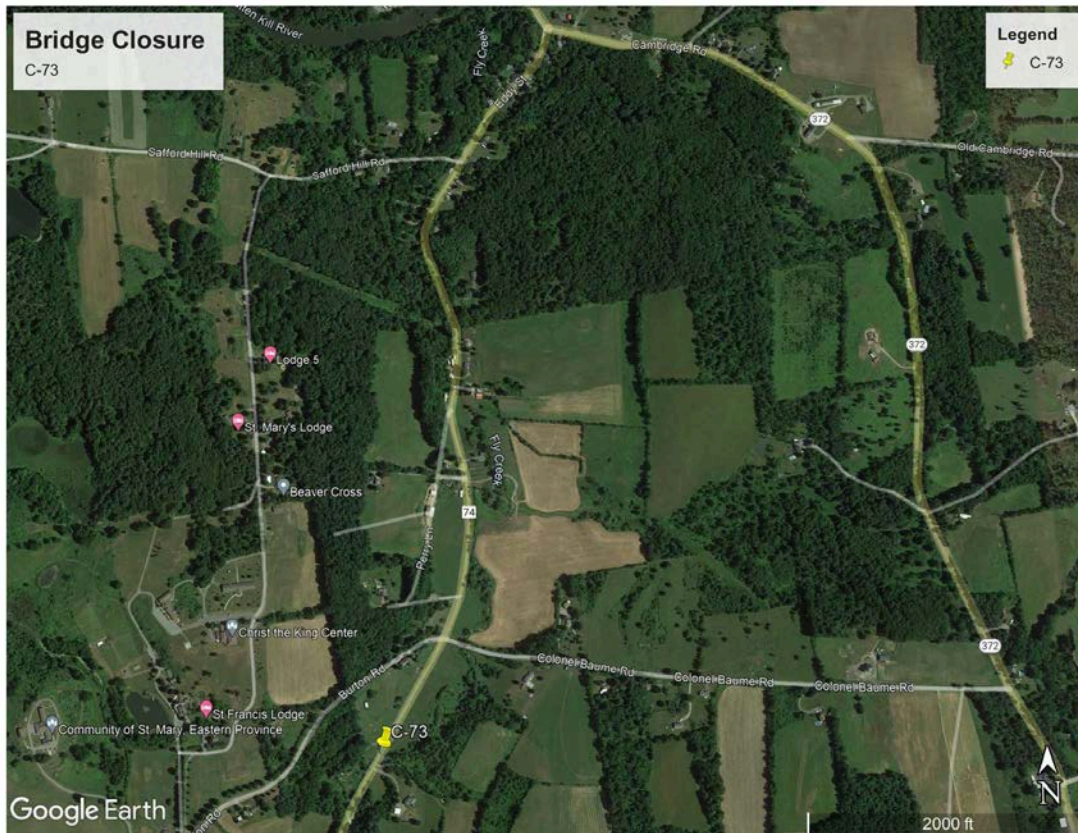


Bridge Closure

Washington County Bridge C-73 – County Route 74 over Fly Creek will be closed Starting

Monday May 16, 2022 at 0700 hours

for approximately 12 weeks for bridge replacement.



Official Detour will utilize County Route 74A and NYS Route 372.

County Route 74 will be closed to all traffic except local residents between Colonel Baume Road and Easton Station Road.